

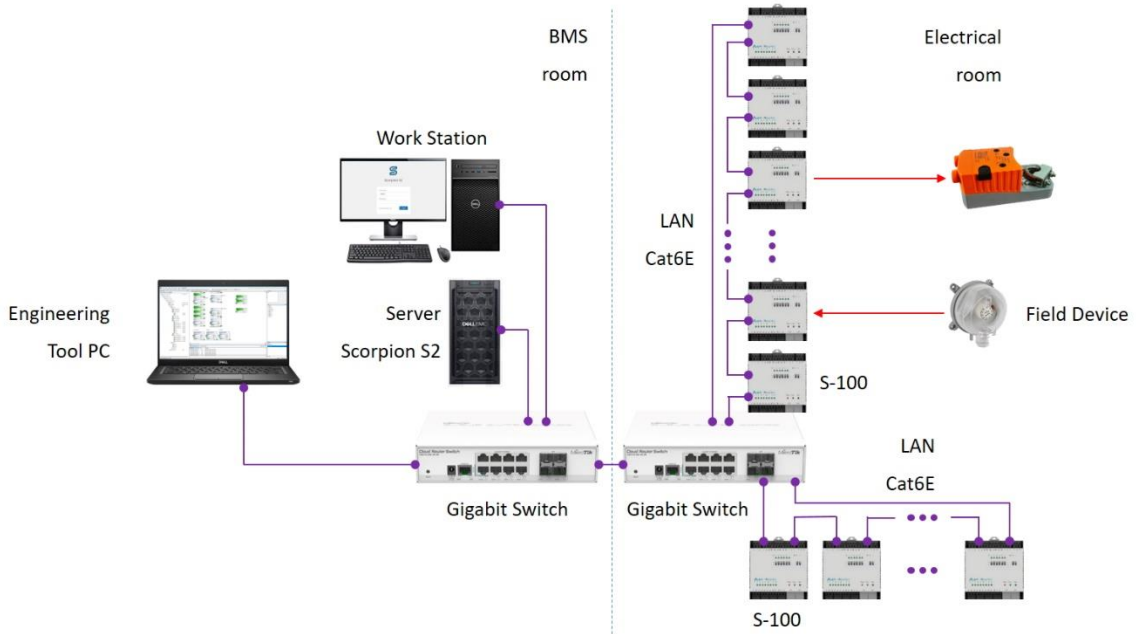
SCORPION – S2

PRODUCT DEFINITION

Scorpion S2 is an building automation platform that provides tools for rapid creation of monitoring and control systems. It makes Building management at an enterprise level possible, give facilities managers the ability to quickly respond to problems and insights to optimize their system.

The S2 is a perfect choice for creating large distributed automation systems. Scorpion S2 runs on servers and in the cloud. Scorpion S2 nodes exchange information among themselves, and interact with external databases in real time.

The S2 allows multiple Scorpion S-100 controllers to be networked together. It serves real-time graphical information to standard Web-browser clients and provides server-level functions. These functions include centralized data logging/trending, archiving , alarming , dashboarding, system navigation, scheduling, database management, and integration with other 3rd system. Additionally, it provides a comprehensive graphical engineering toolset for application development



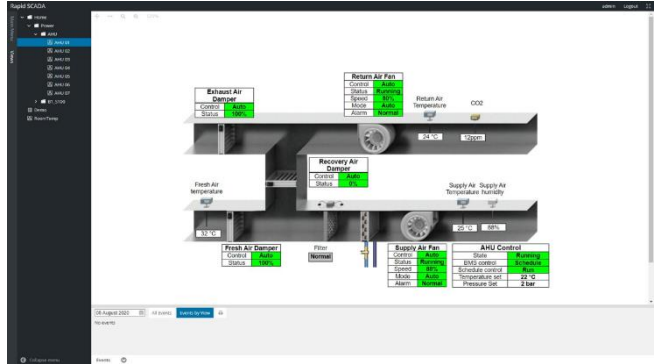
SYSTEM ARCHITECTURE

SUPPORT DRIVERS

Scorpion S2 supports following protocols:

- Modbus TCP: To integrate with S-100 controllers
- SNMP: To integrate with network devices as switch, router, server
- OPC DA: To integrate with 3rd party devices such as BACnet
- MQTT: To integrate with IoT devices
- LefaNNet: To manage S-100 controllers status

Other protocols can be provided as required.



SPECCIFICATION

General Specification

- Manage up to 65000 tags
- Support Modbus IP, SNMP, OPC, MQTT, SMTP, LefaNNet protocol

User Interface

- Support Scheme Editor for HMI with basic components
- Asp.Net, HTML5, JS, C# technology allow the software run on any web-browser
- Quick Template Scheme for similar control devices

- Support Map integration

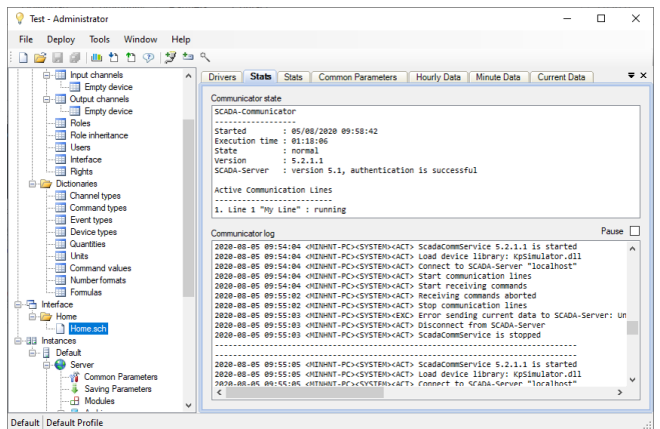
Configuration

- Management up to 65000 tags without extra cost
- Easy configuration with the help of Scorpion Studio Tool
- User management with rights & roles

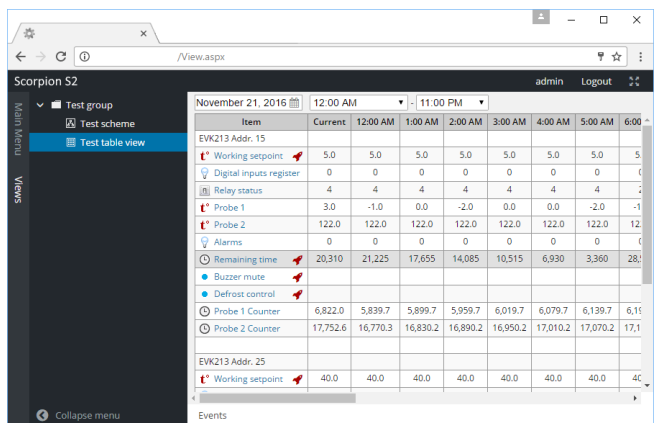
Event & Logging

- Data logging for all tags
- Easy trend with historical data
- Alarm & event summary to easily detect system problem
- Controller status management

USER INTERFACE



CONFIGURATION



LOGGING

SCORPION – S2

SYSTEM REQUIREMENTS

Windows Server Software Requirements

- Operating system: Microsoft Windows Server 2008 R2 SP1 or later, Microsoft Windows 7 SP1 or later.
- Microsoft .NET Framework 4.7.2.
- Microsoft IIS is required to deploy the web application.

Server Hardware Requirements

- Hardware configuration of a server depends on the scale of the automated system. The minimum configuration is determined by the operating system requirements. To estimate the required hard disk space, it is necessary to configure Scorpion S2, then measure the daily increment of archive data size and multiply it by the archive data storing period.
- Scorpion S2 contains its own built-in DBMS, so there is no need of additional charge for third-party DBMS. The software can work on either physical or virtual environment.

Workstation or Tablet Requirements

- Modern browser: Chrome, Firefox, Safari or Edge.
- Microsoft Office 2003 or later is required to view reports

ORDERING INFORMATION

Part Number	Description
S2-BASE	Manage up to 65000 tags Support Modbus IP, SNMP, OPC, MQTT, SMTP, LefaNet protocol Unlimited web-client (support Windows, iOS, Android) Included: <ul style="list-style-type: none"> - Dashboard Plugin - Chart Pro Plugin - Extra Scheme Components Plugin - Tag-Sharing Module - Global Server Schedule Module
S2-MAP	Map Plugin displays the status and parameters of locations on OpenStreetMap interactive maps. The plugin is allowed to monitor geographically distributed systems and navigate to the details page of a location.
S2-RGM	Rapid Gate Module is designed to synchronize data among several Scorpion S2 instances. The module is allowed to setup a backup server, as well as providedata transfer from S2 installed on remote locations to the primary S2.